



**Fitting type:** Apron front / undermount

**Sink handing:** Not handed

**Finish style:** White glaze

- **Min. base unit (bowl, tap & overflow only):** 0 mm
- **Packaged size L x W x D:** 880 x 545 x 250mm
- **Supplied boxed or sleeved:** Boxed - brown
- **Boxed weight:** 41.30 kg
- **Sink only weight:** 36.50 kg

- Durable finest grade fireclay construction throughout
- High capacity bowl volume to accept larger cookware
- Classic elegance, timeless quality
- Hand finished quality
- Practical basket waste supplied

### Included parts:



1 x 470411 (m)  
Double bowl basket waste with  
round overflow



1 x AX1009  
1.5 or 2.0 Bowl pipework



1 AX4037  
Fitting & care instructions & data sheet  
- Provincial

### Recommended accessories:



1 x AX2503  
High & Dry drainer rack - White and  
grey

All accessories can be  
purchased directly from  
[www.abode-shop.co.uk](http://www.abode-shop.co.uk)  
or phone 01226 283434

### Materials and workmanship warranty summary:

- Sink materials & workmanship 10 years.
- Waste kits 1 year.
- Connecting pipework 1 year.

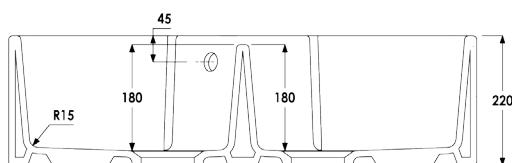
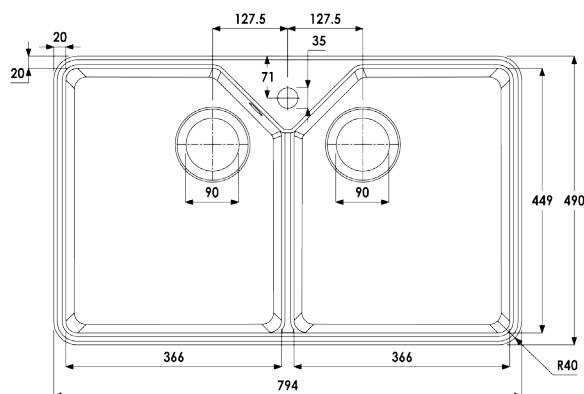
### Care instructions:

- Clean the products regularly using soapy water and a non abrasive cloth, regular cleaning will prevent the build up of lime scale and dirt.
- Avoid contact with corrosive or abrasive substances.
- After cleaning rinse thoroughly with clean water then dry.
- For more detail see supplied booklet or [www.abodedesigns.co.uk](http://www.abodedesigns.co.uk)

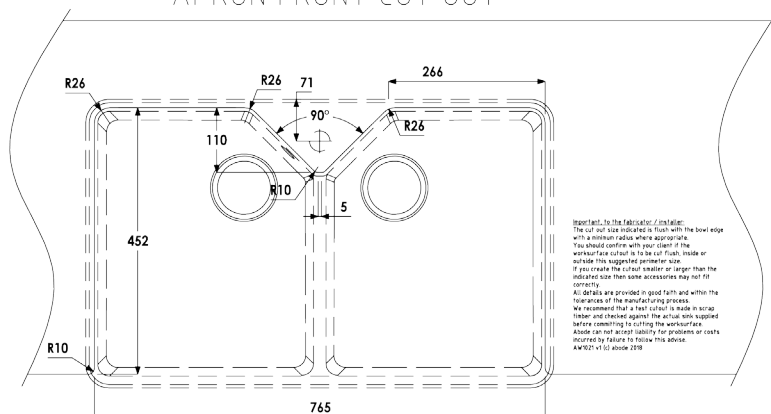
## Product dimensions and installation information: note:



symbol indicates position of acoustic pad on stainless products.



### APRON FRONT CUT OUT



**Additional notes:** Ceramic is a natural hand finished material, you should expect variances in product finishes and sizes

**Overall product size:** 794 x 490 x 220 corner radius 40mm

**Tap hole(s) detail:** 1 x Ø 35mm, precut

**Compatibility with large square taps:**

**Waste hole(s) detail (mm):** / / (nb. 90mm wastes accept a waste disposal unit)

**Min. base unit (refers to space required for bowl, tap and overflow only):** fits 0mm carcass

**Min. Recessed fitting width:** required (bowl(s), tap and overflow: mm

**\*Worktop cut out size:** 765x452 corner radius mm, for .DXF cut files please see [www.abode.eu](http://www.abode.eu)

**Min. & Max worktop depth or clip depth reach range:** - mm

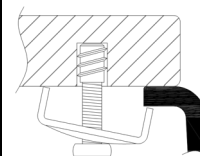
**Fitting template supplied?**

**Dishwasher under drainer?** Distance from top of worktop to underside of the drainer mm



### \*Important, fabricator / installer notes for undermount & flushmount sinks:

The cut out size indicated is aligned with outside edge of the bowl top radius (see example below).



You should confirm with your client if the work surface cutout is to be cut flush, inside or outside this suggested perimeter shape & size.

If you create the cutout smaller or larger than the indicated size then the fit of the accessories may be affected and should be physically checked.

### General:

All details are provided in good faith but do not include the tolerances of the material or manufacturing process.

**We request that a test cutout is made in scrap timber and checked against the actual sink to be installed before committing to cutting the final work surface.**

**Abode can not accept liability for problems or costs incurred by failure to follow this request.**

Note: the dimensions on ceramic fireclay products are subject to wider tolerances due to the nature of this natural material and the firing process.

CAD cutout files can be downloaded from [www.abodedesigns.co.uk](http://www.abodedesigns.co.uk)

### Bowl details: (sizes in mm unless specified otherwise)

#### Bowl 1 (typically main bowl):

**Bowl 1 size L x W x D (mm):** 449 x 366 x 180

**Bowl 1 construction:** , 12.00mm

**Bowl 1 floor radius (mm):**

**Bowl 1 Waste hole diameter (mm):**

**Bowl 1 overflow:**

**Bowl 1 texture:**

**Bowl 1 apx. volume (litres):** 20.10

#### Bowl 2 (typically 1/2 or 3/4 bowl):

**Bowl 2 size L x W x D (mm):** 449 x 366 x 180

**Bowl 2 construction:** , 12.00mm

**Bowl 2 floor radius (mm):**

**Bowl 2 Waste hole diameter (mm):**

**Bowl 2 overflow:**

**Bowl 2 texture:**

**Bowl 2 apx. volume (litres):** 26.00

#### Bowl 3:

**Bowl 3 size L x W x D (mm):** x x

**Bowl 3 construction:** , mm

**Bowl 3 floor radius (mm):**

**Bowl 3 Waste hole diameter (mm):**

**Bowl 3 overflow:**

**Bowl 3 texture:**

**Bowl 3 apx. volume (litres):**